

Policy and Partnership Working

Presentation and report to Communities and Partnership Scrutiny Committee 17th October 2011

Cllr Bob Price, Leader

Peter McQuitty, Head of Service

Val Johnson, Policy Team Leader

Sebastian Johnson, Strategic Policy and Partnerships Officer

Mark Fransham, Social Research Officer

Margaret Melling, Consultation Officer

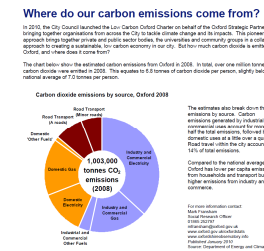
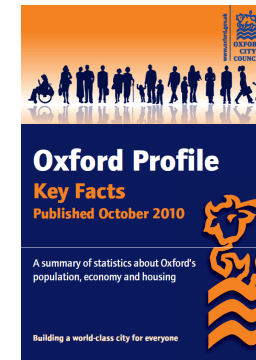


Social Research

Supports strategy development and service delivery through analysis and presentation of quantitative data. One half time post.

- Bespoke analysis for strategy development and influencing partners
- Presentations (e.g. state of the economy for the Oxford Strategic Partnership)
- Respond to enquiries from officers, members, partners and the public
- Dissemination of findings through 'Chart of the Month' and www.oxford.gov.uk/oxfordstats
- Oxford Profile: Key Facts leaflet
- Member of Census Quality Assurance Advisory Group
- Represents us on Oxfordshire Data Observatory

www.oxford.gov.uk



Consultation

In the past year our consultation with residents has led to (for example):

- Amendments to 33 of the 93 sites in the “Sites and Housing Issues and Options” consultation
- Establishing a new “Friends of the Museum” group
- Reports shared with Thames Valley Police that help set priorities
- Reinstatement of a number of items proposed to be removed from the Council’s budget

The work to improve our consultation practice is currently focused on:

- Publicising consultation and how to “have your say”
- Extending access
- Evaluating and sharing best practice

Inform

Research

Consult

Involve

Collaborate

Empower

www.oxford.gov.uk

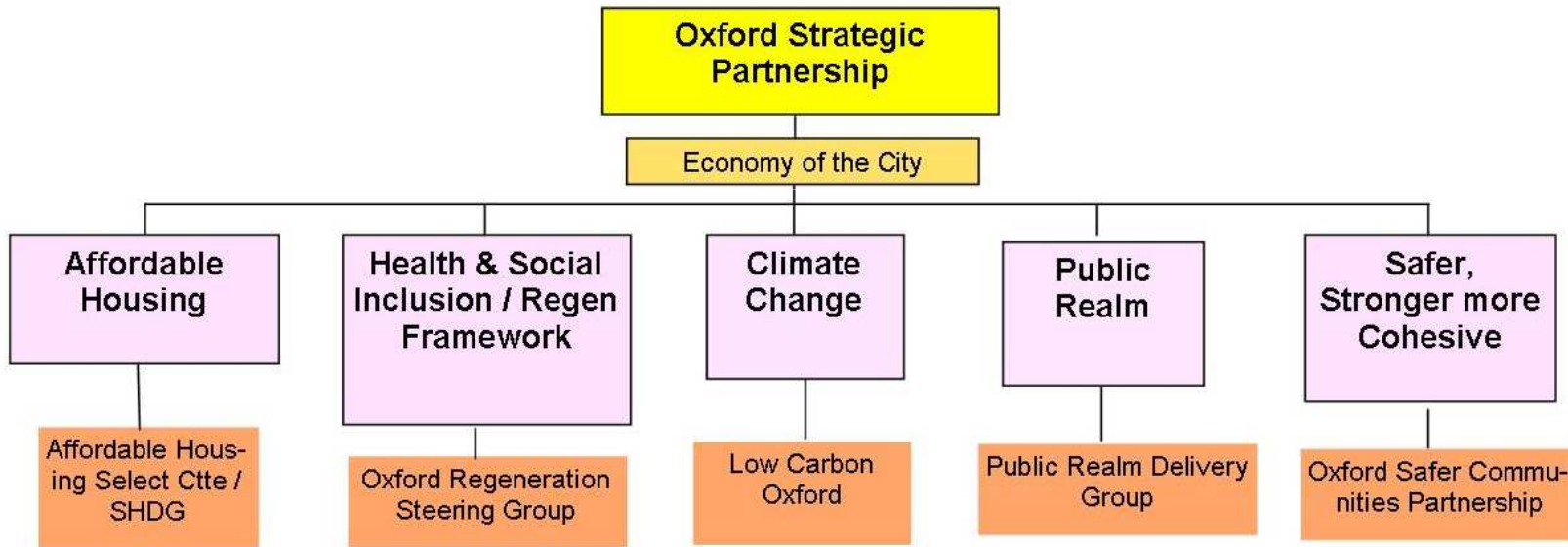


Oxford Strategic Partnership Structure and Sub Groups

www.oxford.gov.uk

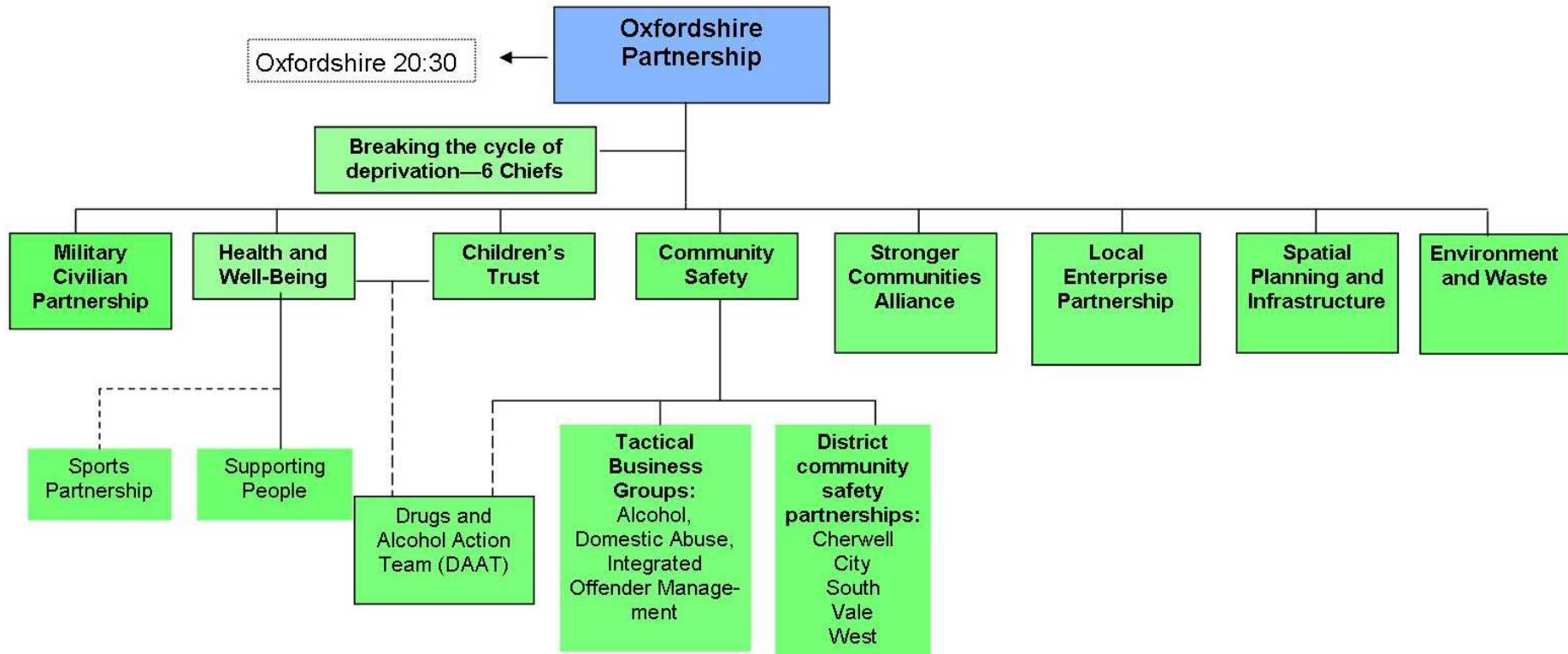


24



Oxfordshire and the thematic Partnerships - Structure

25



Thank You

Any Questions?

www.oxford.gov.uk



**OXFORD
CITY
COUNCIL**

